

ITGB8 Antibody (Center)
Purified Rabbit Polyclonal Antibody (Pab)
Catalog # AP21056a**Specification**

ITGB8 Antibody (Center) - Product Information

Application	WB, IHC-P,E
Primary Accession	P26012
Other Accession	P26013 , Q0VBD0 , D3ZP06
Reactivity	Human
Predicted	Mouse, Rabbit
Host	Rabbit
Clonality	Polyclonal
Isotype	Rabbit IgG
Antigen Region	197-231

ITGB8 Antibody (Center) - Additional Information**Gene ID** 3696**Other Names**

Integrin beta-8, ITGB8

Target/Specificity

This ITGB8 antibody is generated from a rabbit immunized with a KLH conjugated synthetic peptide between 197-231 amino acids from the Central region of human ITGB8.

Dilution

WB~~1:1000

IHC-P~~1:25

E~~Use at an assay dependent concentration.

Format

Purified polyclonal antibody supplied in PBS with 0.09% (W/V) sodium azide. This antibody is purified through a protein A column, followed by peptide affinity purification.

Storage

Maintain refrigerated at 2-8°C for up to 2 weeks. For long term storage store at -20°C in small aliquots to prevent freeze-thaw cycles.

Precautions

ITGB8 Antibody (Center) is for research use only and not for use in diagnostic or therapeutic procedures.

ITGB8 Antibody (Center) - Protein Information**Name** ITGB8 ([HGNC:6163](#))

Function Integrin alpha-V:beta-8 (ITGAV:ITGB8) is a receptor for fibronectin (PubMed:[1918072](#)). It recognizes the sequence R-G-D in its ligands (PubMed:[1918072](#)). Integrin alpha-V:beta-6 (ITGAV:ITGB6) mediates R-G-D-dependent release of transforming growth factor beta-1 (TGF-beta-1) from regulatory Latency-associated peptide (LAP), thereby playing a key role in TGF-beta-1 activation on the surface of activated regulatory T-cells (Tregs) (Probable). Required during vasculogenesis (By similarity).

Cellular Location

Cell membrane; Single-pass type I membrane protein

Tissue Location

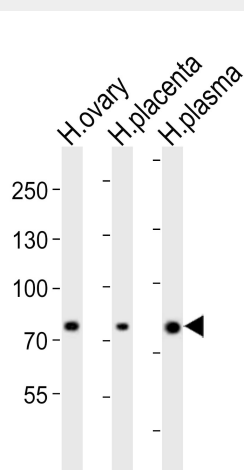
Placenta, kidney, brain, ovary, uterus and in several transformed cells. Transiently expressed in 293 human embryonic kidney cells.

ITGB8 Antibody (Center) - Protocols

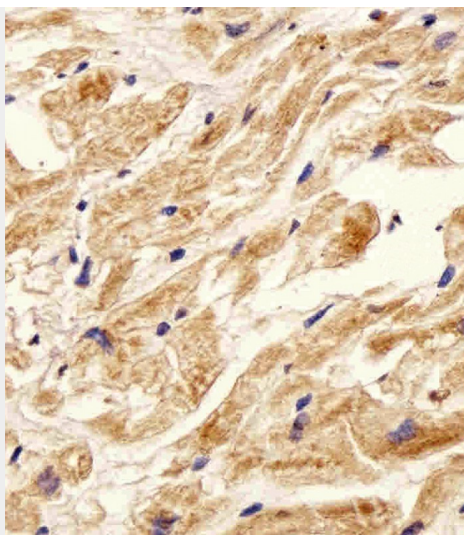
Provided below are standard protocols that you may find useful for product applications.

- [Western Blot](#)
- [Blocking Peptides](#)
- [Dot Blot](#)
- [Immunohistochemistry](#)
- [Immunofluorescence](#)
- [Immunoprecipitation](#)
- [Flow Cytometry](#)
- [Cell Culture](#)

ITGB8 Antibody (Center) - Images



Western blot analysis of lysates from human ovary, human placenta, human plasma tissue lysate (from left to right), using ITGB8 Antibody (Center)(Cat. #AP21056a). AP21056a was diluted at 1:1000 at each lane. A goat anti-rabbit IgG H&L(HRP) at 1:10000 dilution was used as the secondary antibody. Lysates at 20ug per lane.



Immunohistochemical analysis of paraffin-embedded H. heart section using ITGB8 Antibody (Center)(Cat#AP21056a). AP21056a was diluted at 1:25 dilution. A undiluted biotinylated goat polyvalent antibody was used as the secondary, followed by DAB staining.

ITGB8 Antibody (Center) - Background

Integrin alpha-V/beta-8 is a receptor for fibronectin.

ITGB8 Antibody (Center) - References

Moyle M.,et al.J. Biol. Chem. 266:19650-19658(1991).
Scherer S.W.,et al.Science 300:767-772(2003).
Mural R.J.,et al.Submitted (JUL-2005) to the EMBL/GenBank/DDBJ databases.
Hillier L.W.,et al.Nature 424:157-164(2003).